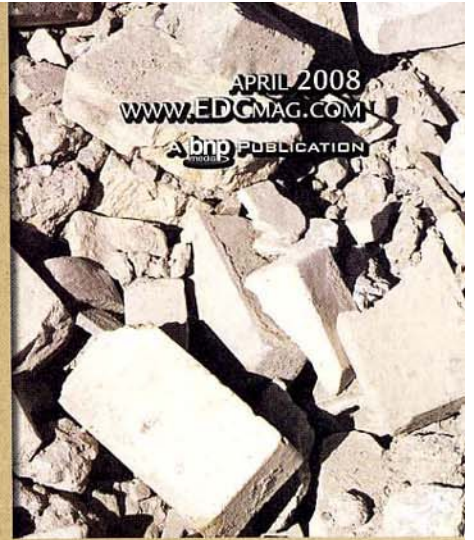


Environmental Design+ Construction

THE PREMIER SOURCE FOR INTEGRATED HIGH-PERFORMANCE BUILDING

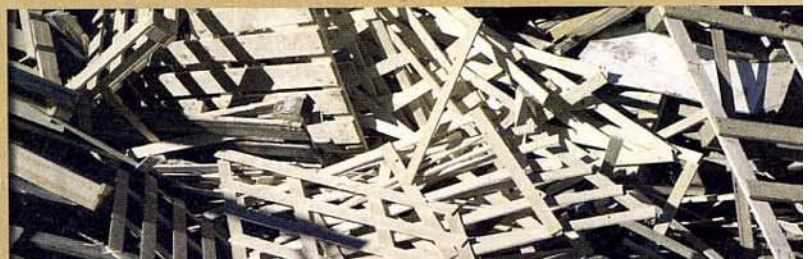
APRIL 2008
WWW.EDCMAG.COM

A Dnp PUBLICATION



renovate:
reduce, reuse, recycle

SPECIAL SECTION: COOL ROOFING



NEW + NOTABLE

To request more information on these products, visit www.EDCmag.com/webcard and enter the corresponding reader service numbers.



1 RECYCLABLE BROADLOOM CARPET

Dalton, Ga. — EcoWorx Performance Broadloom carpet from Shaw Contract Group is designed to be a cradle-to-cradle product that is strong, light and recyclable in a closed-loop cycle, the company reports. EcoWorx Performance Broadloom is broken down after its useful life through a process called dissolution, which dramatically reduces waste. Backing and fiber are remade into themselves again and again. Even the bio-based dissolving solution is reusable. www.shawcontractgroup.com.

SHAW CONTRACT GROUP

READER SERVICE NO. 170



2 RECYCLED GLASS TILE

Ashland, Ore. — Hakatai Enterprises, importer and distributor of glass mosaic tile, has improved and expanded its Ashland series, the company reports. The new Ashland-e series is comprised of between 30 and 70 percent recycled glass from bottles and/or other waste glass. In addition to the new content, Hakatai has added new colors, sizes and finishes. In addition to the selection of colors available in 1" x 1" mosaics, 1" x 2" subway-style mosaics are available in four unique blends. www.hakatai.com.

HAKATAI ENTERPRISES, INC.

READER SERVICE NO. 171

3 NEW C2C-CERTIFIED TEXTILES

New York — Carnegie's latest additions to its line of Xorel textiles, Glide and Slide are created for panels, upholstery, upholstered walls, and wall covering applications, the company reports. Made entirely of the Xorel material, Glide and Slide are non-absorbent textiles, meaning dust and stains cannot penetrate them. Glide and Slide are woven off of a specially designed, multi-colored warp, which blurs the pattern's "lines," thus creating a softening or blurring effect in the final pattern. Slide and Glide have also achieved Cradle to Cradle (C2C) Silver certification. www.carnegiefabrics.com.

CARNEGIE

READER SERVICE NO. 172

4 INTERNET-BASED EVALUATION TOOL

Dalton, Ga. — J&J / Invision has introduced ecoScorecard — an Internet-based tool that enables architects, designers and end-users to search, evaluate and document products based on varied environmental parameters.

The company reports that EcoScorecard is a powerful, easy-to-use tool with a built-in algorithm to provide a comprehensive accounting of how a specific product contributes to selected sustainability criteria. It provides an objective evaluation based on a wide array of accepted protocols such as GGHC, Labs21, NSF-140 and LEED. www.jjcommercial.com and www.invisioncarpet.com.

J&J / INVISION

READER SERVICE NO. 173

